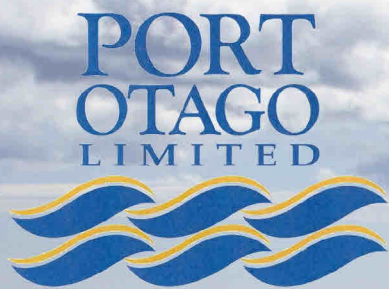


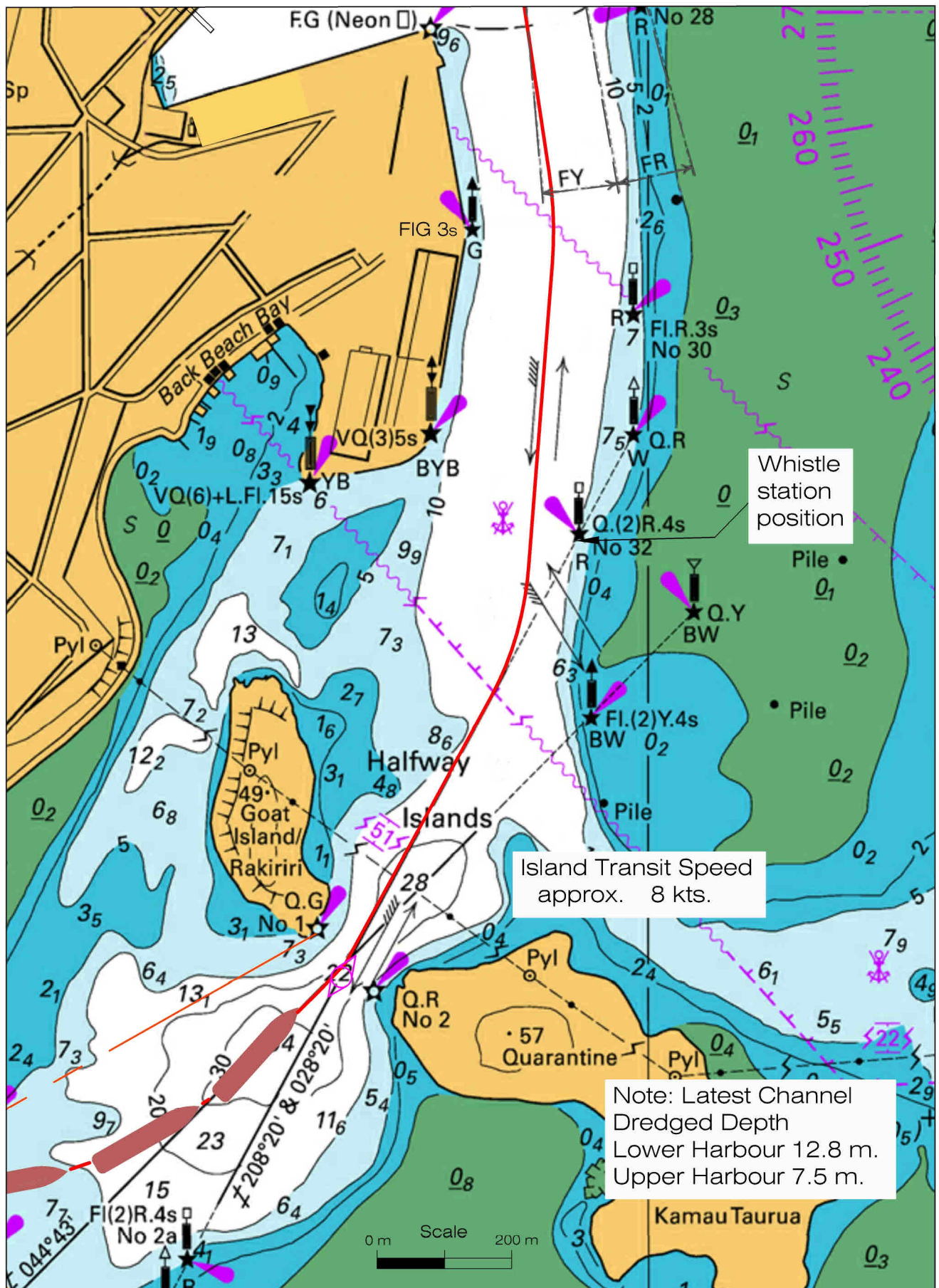
OTAGO UPPER HARBOUR PILOTAGE GUIDE



Revision 4 - November, 2014

Chart not to be used for navigation

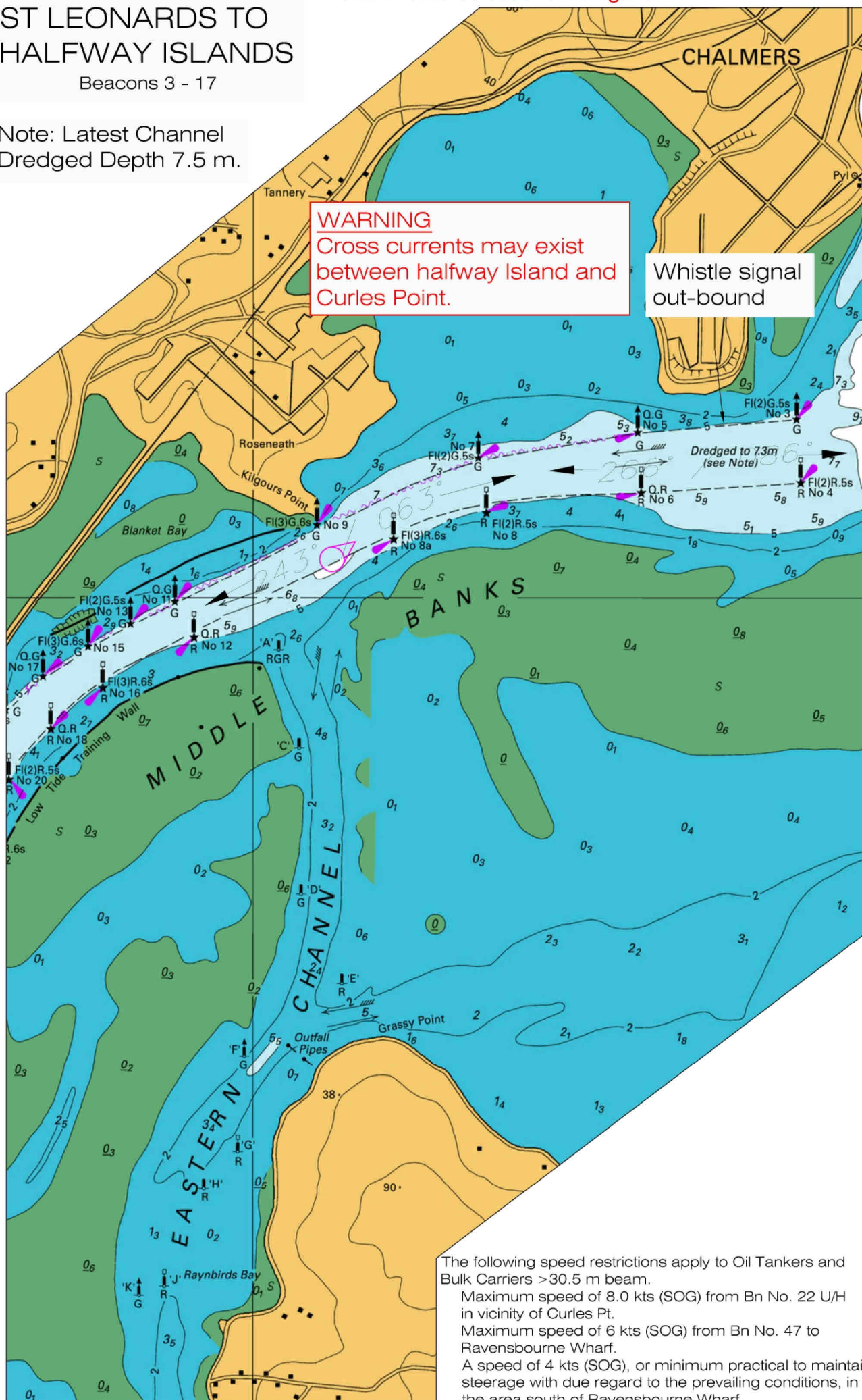
Shipping Services\11134\15



Beacons 3 - 17

WARNING
Cross currents may exist
between halfway Island and
Curles Point.

Whistle signal
out-bound



The following speed restrictions apply to Oil Tankers and Bulk Carriers >30.5 m beam.

Maximum speed of 8.0 kts (SOG) from Bn No. 22 U/H in vicinity of Curles Pt.

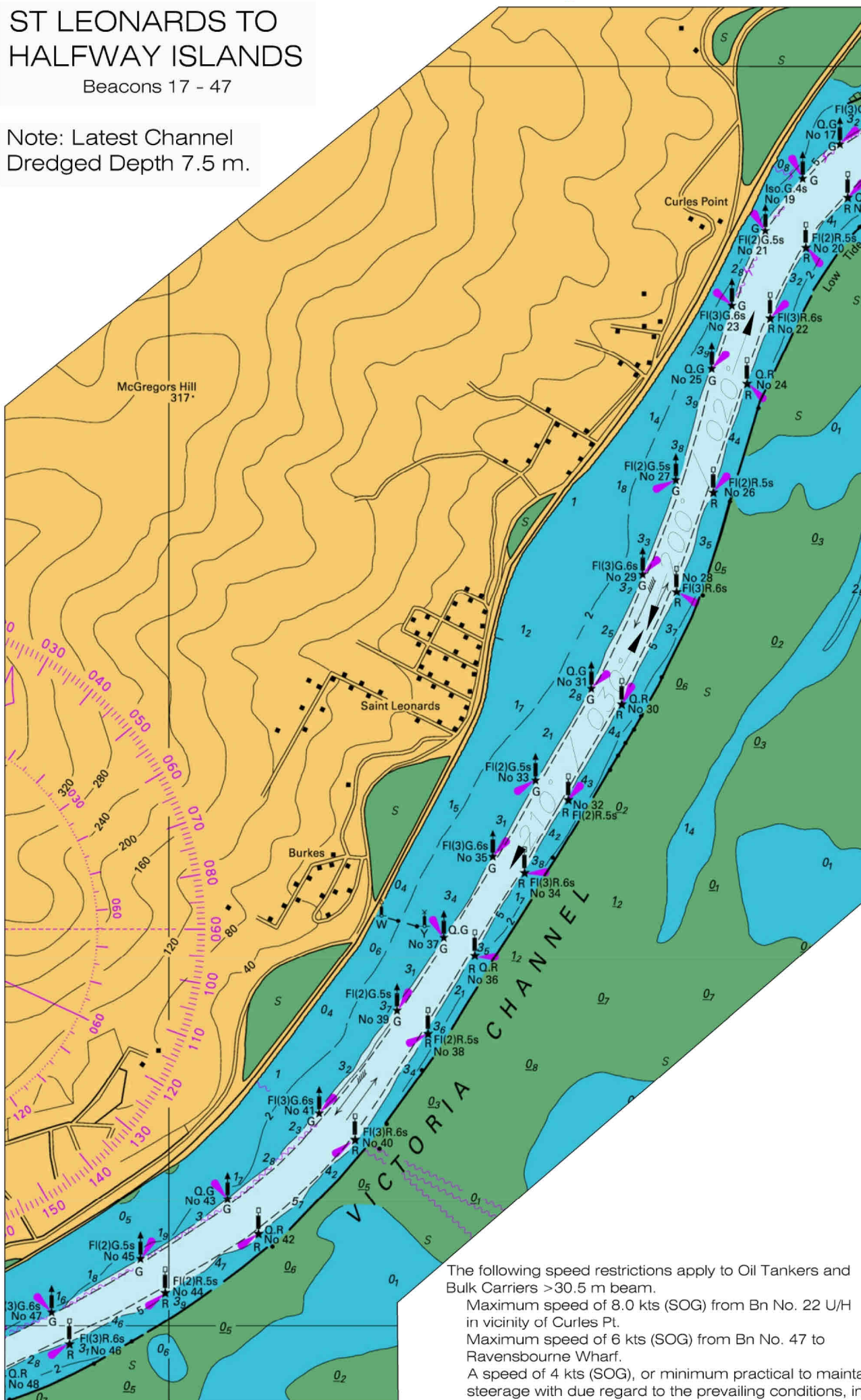
Maximum speed of 6 kts (SOG) from Bn No. 47 to Ravensbourne Wharf.

A speed of 4 kts (SOG), or minimum practical to maintain steerage with due regard to the prevailing conditions, in the area south of Ravensbourne Wharf.

17

ST LEONARDS TO
HALFWAY ISLANDS

Beacons 17 - 47

Note: Latest Channel
Dredged Depth 7.5 m.

The following speed restrictions apply to Oil Tankers and Bulk Carriers >30.5 m beam.

Maximum speed of 8.0 kts (SOG) from Bn No. 22 U/H in vicinity of Curles Pt.

Maximum speed of 6 kts (SOG) from Bn No. 47 to Ravensbourne Wharf.

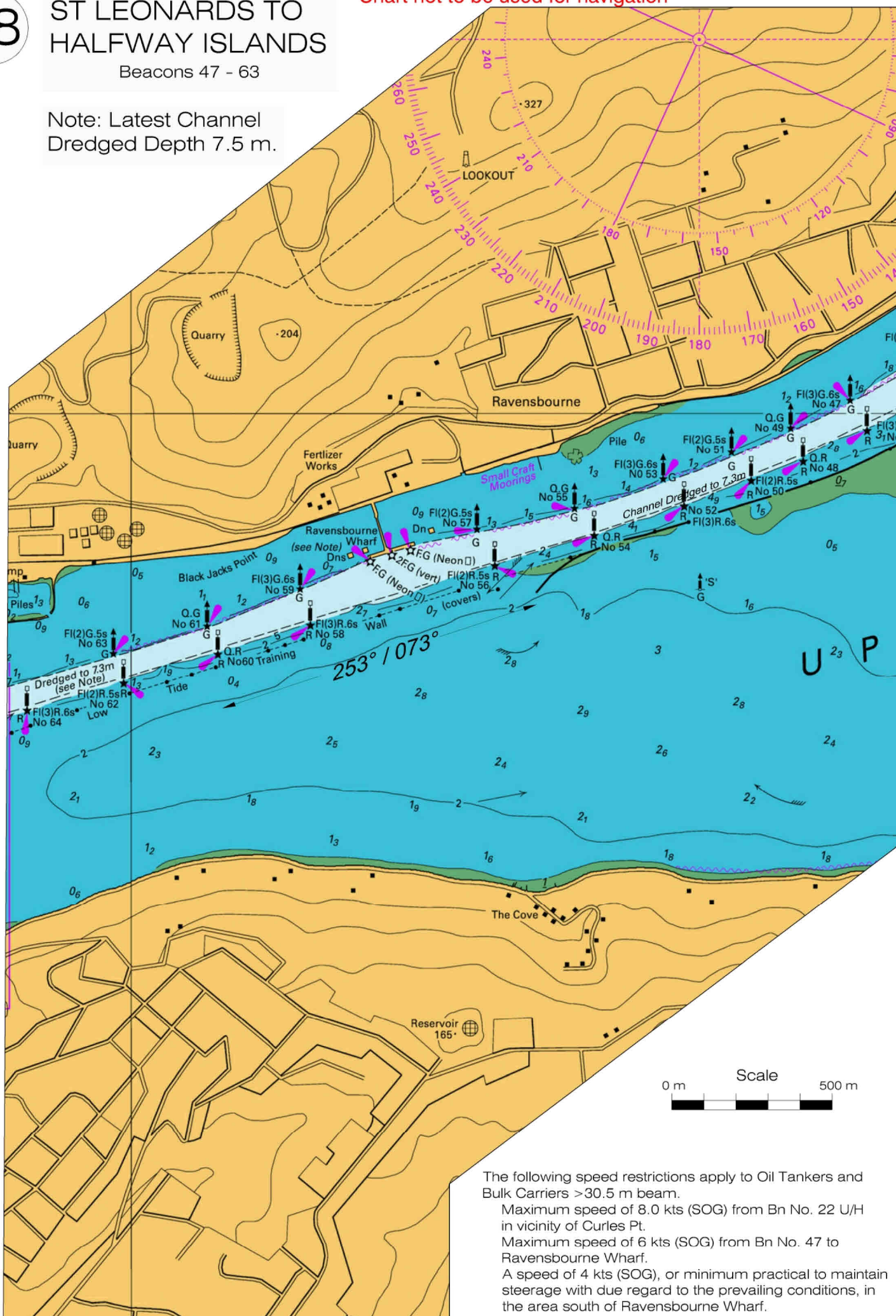
A speed of 4 kts (SOG), or minimum practical to maintain steerage with due regard to the prevailing conditions, in the area south of Ravensbourne Wharf.

ST LEONARDS TO
HALFWAY ISLANDS

Beacons 47 - 63

Note: Latest Channel
Dredged Depth 7.5 m.

Chart not to be used for navigation



Scale
0 m 500 m

The following speed restrictions apply to Oil Tankers and Bulk Carriers >30.5 m beam.

Maximum speed of 8.0 kts (SOG) from Bn No. 22 U/H in vicinity of Curles Pt.

Maximum speed of 6 kts (SOG) from Bn No. 47 to Ravensbourne Wharf.

A speed of 4 kts (SOG), or minimum practical to maintain steerage with due regard to the prevailing conditions, in the area south of Ravensbourne Wharf.

190 m Ship

Chart not to be used for navigation

